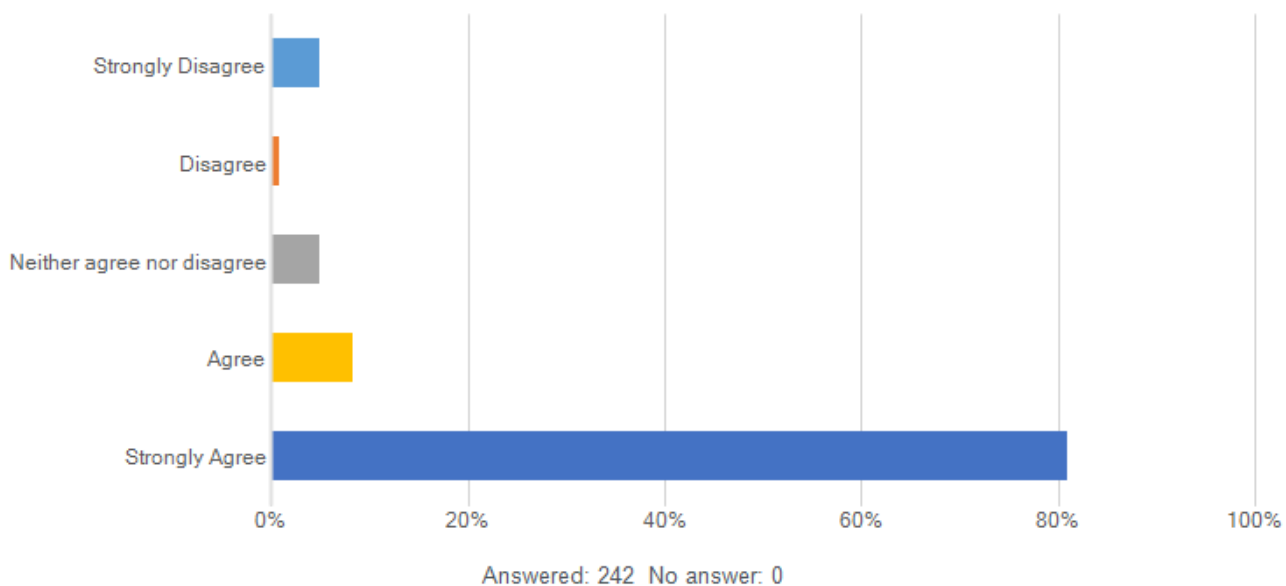


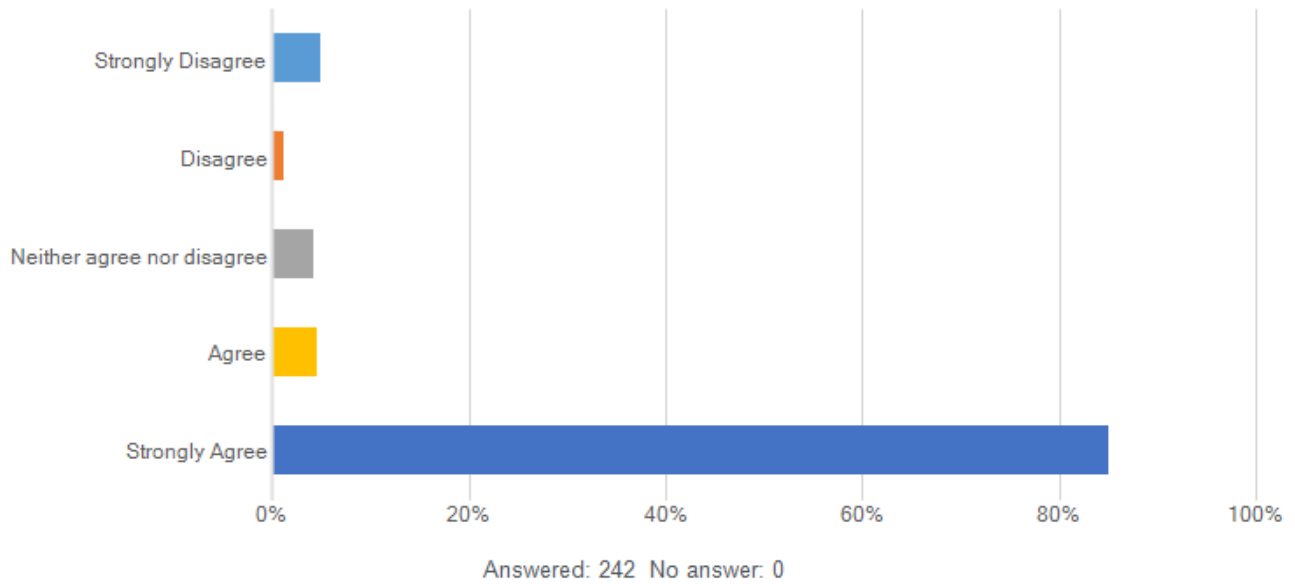
Senior Schooling Wednesday P5 Survey1. There are benefits for me in having period 5 Wednesday free to either leave school early or stay at school to study.



Answer choice	Responses	Percent
Strongly Disagree	12	5.0%
Disagree	2	0.8%
Neither agree nor disagree	12	5.0%
Agree	20	8.3%
Strongly Agree	196	81.0%
Total	242	100%

Min	Max	Mean	Variance	Standard deviation	Total n	Valid n
1	5	4.6	1.0	1.0	242	242

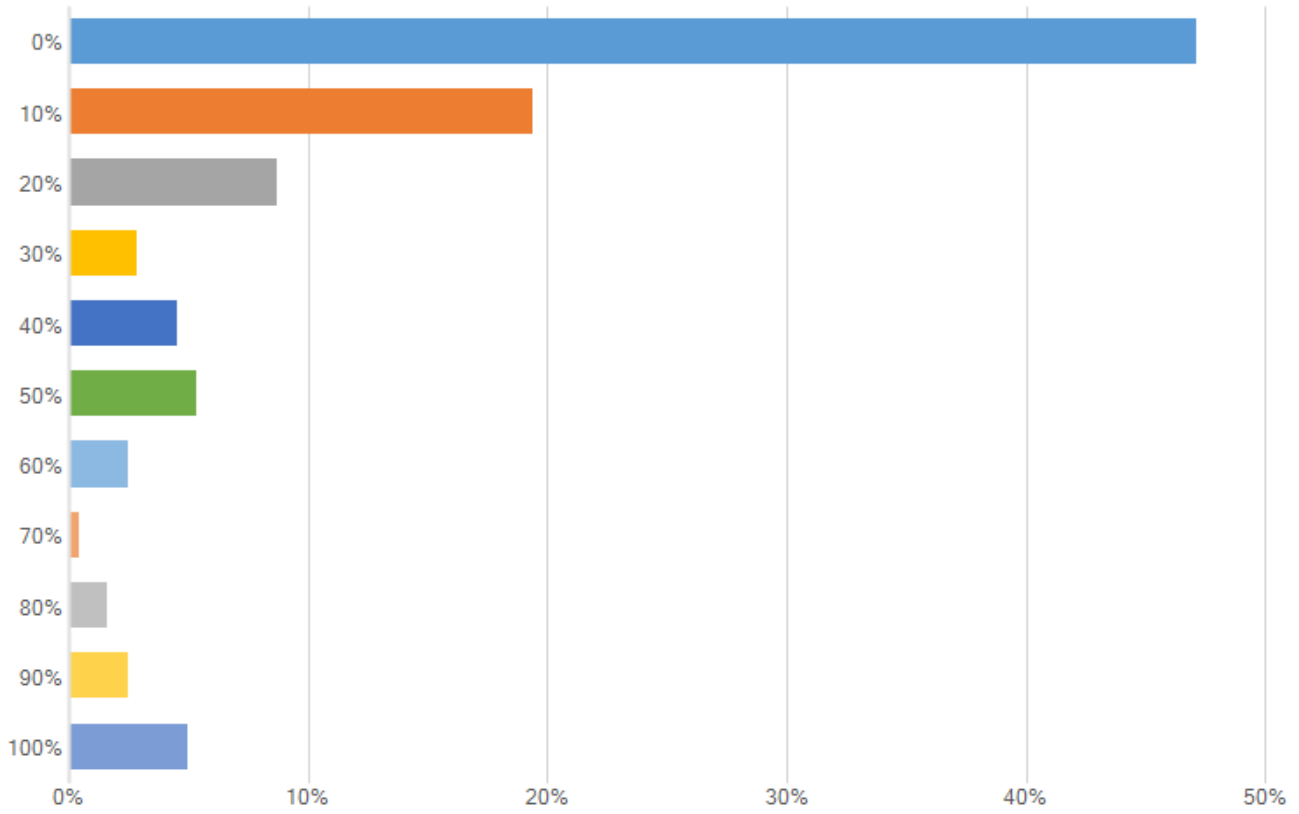
2. I would like to continue having Wednesday period 5 free to either leave school early or stay at school to study in 2025.



Answer choice	Responses	Percent
Strongly Disagree	12	5.0%
Disagree	3	1.2%
Neither agree nor disagree	10	4.1%
Agree	11	4.5%
Strongly Agree	206	85.1%
Total	242	100%

Min	Max	Mean	Variance	Standard deviation	Total n	Valid n
1	5	4.6	1.0	1.0	242	242

3. How often do you choose to stay back at school during P5 on Wednesdays?



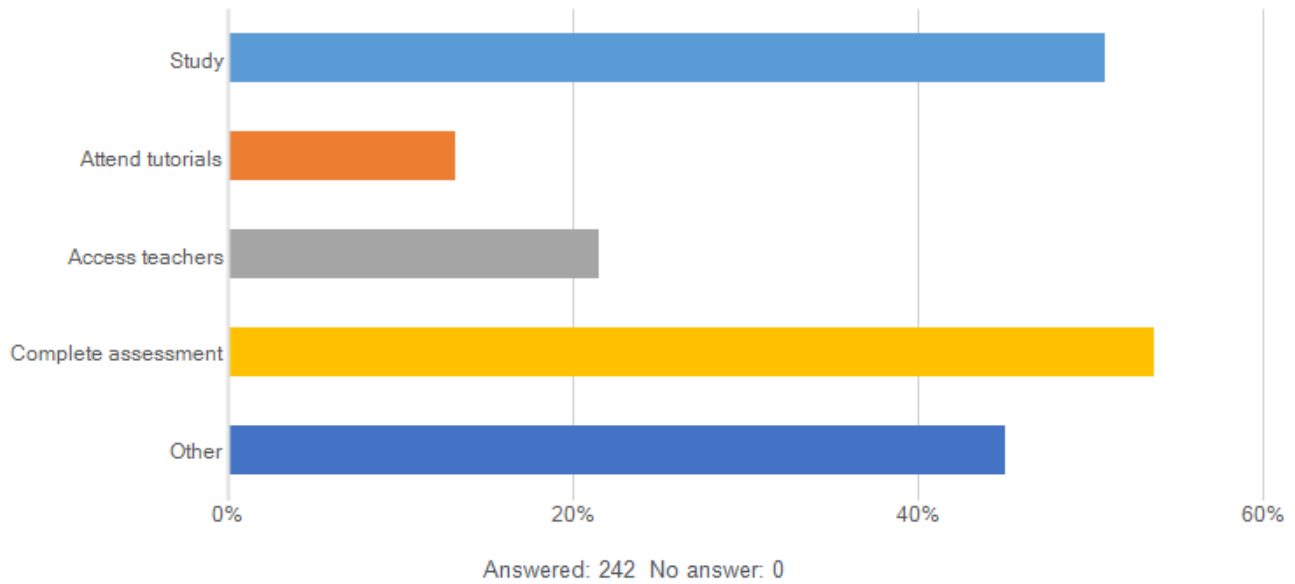
Answered: 242 No answer: 0

Answer choice	Responses	Percent
0%	114	47.1%
10%	47	19.4%
20%	21	8.7%
30%	7	2.9%
40%	11	4.5%
50%	13	5.4%
60%	6	2.5%
70%	1	0.4%
80%	4	1.7%
90%	6	2.5%
100%	12	5.0%

Answer choice					Responses	Percent
Total					242	100%

Min	Max	Mean	Variance	Standard deviation	Total n	Valid n
1	11	2.9	8.3	2.9	242	242

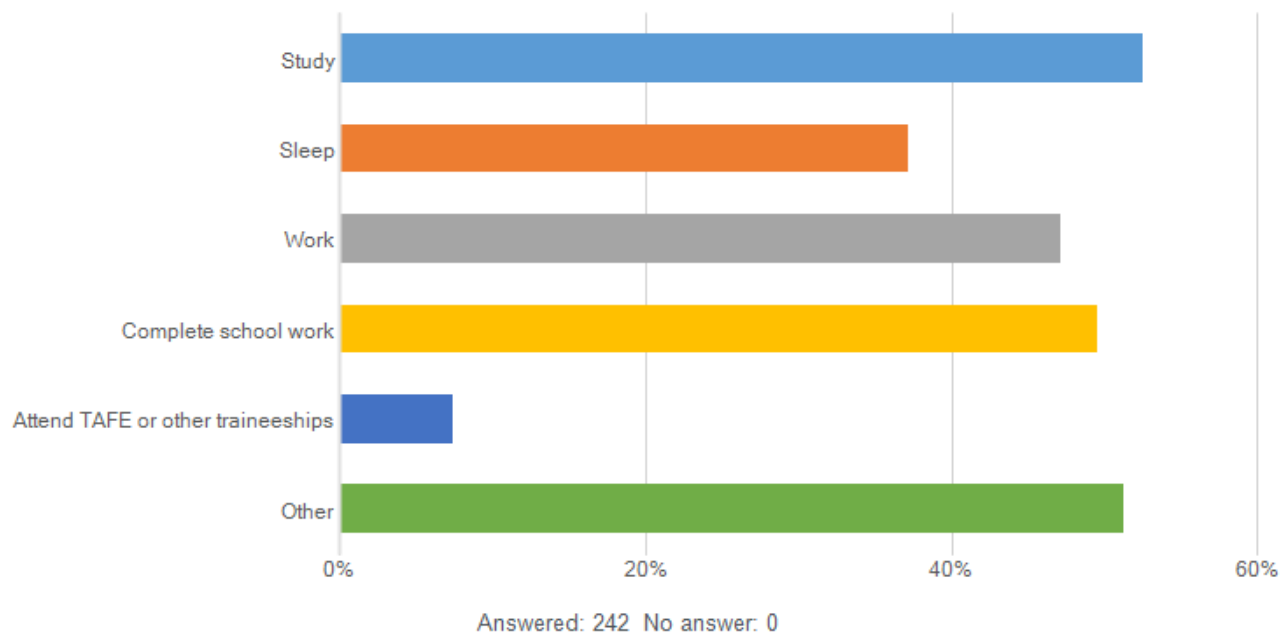
4. When I choose to stay at school, I:(Tick as many as applicable)



(respondent could choose more than one response)

Answer choice	Responses	Percent
Study	123	50.8%
Attend tutorials	32	13.2%
Access teachers	52	21.5%
Complete assessment	130	53.7%
Other	109	45.0%
Total Respondents	242	

5. If I choose to go home, I:(Tick as many as applicable)



(respondent could choose more than one response)

Answer choice	Responses	Percent
Study	127	52.5%
Sleep	90	37.2%
Work	114	47.1%
Complete school work	120	49.6%
Attend TAFE or other traineeships	18	7.4%
Other	124	51.2%
Total Respondents	242	

